



4.3 inch ESP32 module

JC4827W543N/R/C



List

Product description.....	3
Features.....	3
Product parameters.....	4
Interface Description.....	5
Product Size.....	6



Product description

This LCD module uses ESP32-S3-WROOM-1 module as the main control, the main control is a dual-core MCU, integrated WI-FI and Bluetooth functions, the main frequency can reach 240MHz, 512KB SRAM, 384KB ROM, 8M PSRAM, Flash size is 4MB, The display resolution is 480*272, resistive touch or Capacitive touch. The module includes LCD display screen, backlight control circuit, touch screen control circuit. Reserve the TF card interface, Up to 10 IO available, this module supports development in arduino IDE, ESP IDE, Micropython and Guition.

Features

- 4.3-inch color screen, support 16 BIT RGB 65K color display, display rich colors
- 480X272 resolution
- The sample program has been programmed in the factory and can be plugged in
- With TF card slot for easy expansion storage
- Provide arduino library functions and sample programs to facilitate rapid secondary development
- Lithium battery charging and discharging circuit with overcharging and discharging protection
- Up to 10 IOs can be used separately by customers
- Support one-click download program
- Military-grade process standards, long-term stable work

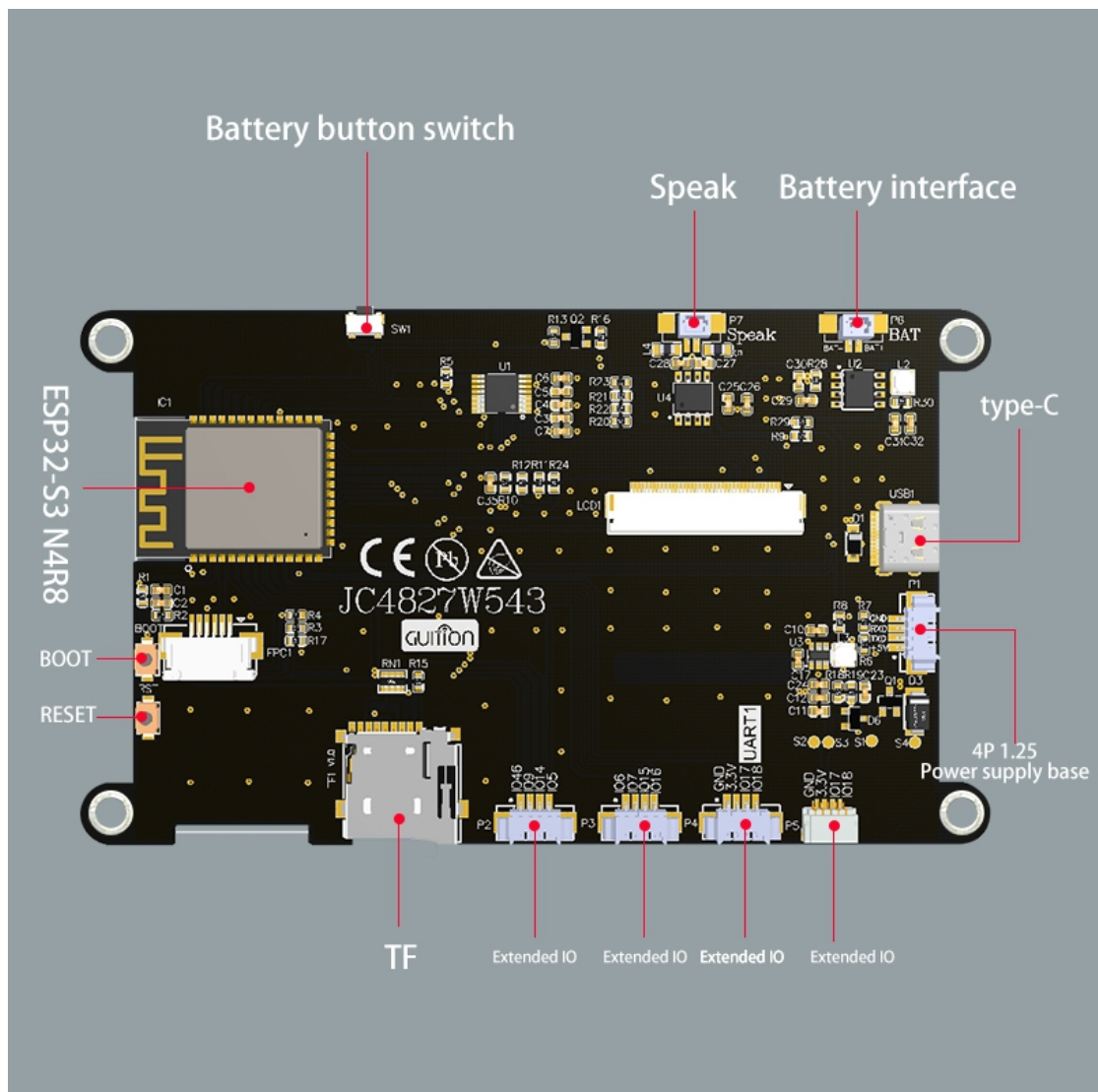


Product parameters

Name	Describe	Remark
Display color	RGB 65K color	
SKU	Resistive touch: ESP32-4827S043N	
SKU	Resistive touch: ESP32-4827S043R	
SKU	Capacitive touch: ESP32-4827S043C	
Size	4.3 inch	
Type	TFT	
Driver chip	ST3401A	
Resolution	480*272(Pixel)	
Effective display area	95.04* 53.86(mm)	
Module size	120*70.2(mm)	
View	IPS	
Operating temperature	-20℃~70℃	
storage temperature	-30℃~80℃	
Operating Voltage	5V	
Power consumption	About 260mA	
Product weight	About 130g	



Interface Description





Product Size

